



Heat recovery unit WHR 930

Important features

- **EPC gain of up to 0.28!**
- High thermal efficiency
- 100% bypass fitted as standard
- Air capacity 380m³/h - 1150Pa
- Flexible filter settings
- Standard with frost protection system
- With maintenance instructions for resident
- Available in radiographic version WHR 930 RF
- Available with switch including filter and malfunction alert
- Free filter set for residents



General

The heat recovery unit, type WHR 930, is intended for application in residential 'Balanced ventilation systems'. These systems extract the stale air from kitchens, bathrooms, toilets and other rooms where necessary. Fresh outdoor air is supplied to living areas, such as living rooms and bedrooms. Heat transfer takes place between the extracted air and the supplied air. The WHR 930 RF type is available for radiographic control of the unit.

Casing

The casing is made of coated plate with a plastic designer front panel (RAL 7037). The interior and the duct connections are made of high-grade expanded polypropylene. The WHR 930 has 4 air connections (Ø 150 mm) positioned at an angle of 45°. These connections are fitted with 45° bends which can be individually directed upwards or sideways. A plastic condensation drain, with a Ø 32mm connection, has been fitted to the bottom of the unit in order to drain any condensation which

might form in the unit and in the external air outlet. In order to prevent condensation, it is important to insulate the outdoor exhaust ducts and outdoor air ducts with damp-proof insulation.

Fans

The WHR 930 has low-energy continuously variable DC motors with backward-curved blades. These blades make the WHR 930 a low-maintenance unit. The DC motors offer a substantial energy saving relative to AC motors.

Filters

The WHR 930 is fitted with a G3 filter in both the supply and exhaust side. Both filters can be easily removed and changed by residents without tools. The WHR 930 unit has a flexible dirty-filter alert. Residents can set the unit according to whether they live in a rural, urban or normal area. This setting affects the frequency with which the filter registers as dirty. The fan's speed also influences the frequency with which the dirty-filter alert is activated. This alert is a

signal to the resident to clean or replace the filters.

Heat exchanger

The high-quality plastic counterflow exchanger has a thermal yield of 95%.

Frost protection system

The WHR 930 is fitted with a frost protection system as standard. An automatic regulator activates a heating element when the outside temperature drops below the freezing point for some time. The cold outside air is then pre-heated before it enters the heat exchanger. This increases the temperature of the air to above 0° C so the heat exchanger is not subject to freezing. This system guarantees balanced ventilation up to a maximum of 150m³/h at -15°C.

Display

The WHR has a display with touch controls which allows for easy adjustment of the various settings and easy reading of data. This enables the resident to adjust the comfort temperature and the dirty-



Heat recovery unit WHR 930

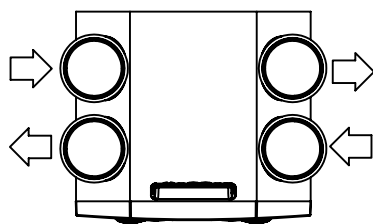
filter alert, for instance.

Regulation

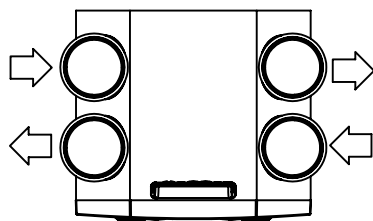
The 3 speeds can be variably set, from 15 to 100%. The 3-position switch SA 1-3V or the switch on the non-powered extractor hood or the ExSense hybrid chimney is used to switch the WHR 930 between high, medium or low. A 3-position switch with a malfunction and filter indicator is also available (type SAI Flash). The radiographic control (RF type) allows for cordless operation of the unit.

Air direction/connection

L = Residential Connection Left
(condensation drain bottom right)
R = Residential Connection Right
(condensation drain bottom left)



roof (right) dwelling



dwelling (left) roof

Extractor hood

It is not possible to connect a powered extractor hood to the WHR system. The solution is the WK non-powered extractor hood or the ExSense hybrid chimney. This

modern stainless-steel chimney combines central extraction and recirculation. Selecting the chimney with connection box offers even greater ease of operation, as the WHR system automatically switches to its highest setting as soon as ExSense is in use.

Electrical connection

The WHR 930 is fitted with a 5-core cable and Perilex plug as standard, for connection to single-phase 230 V, 50 Hz. Length of free cable is 2.3 metres.

Options

Radio control: WHR 930 RF

The WHR 930 is available in a radiographic control version: WHR 930 RF. This version offers even greater ease of operation. This cordless method of operating the unit with the RFZ prevents the installation of a separate electrical system in addition to the existing channels. This allows for the use of multiple RFZ switches. The RFZ is fitted with filter and malfunction LED indicators. These light up the moment the switch is operated.

Base

The WHR 930 can be mounted on the wall or fitted free-standing. A special base is available for this purpose.

Pulse switch

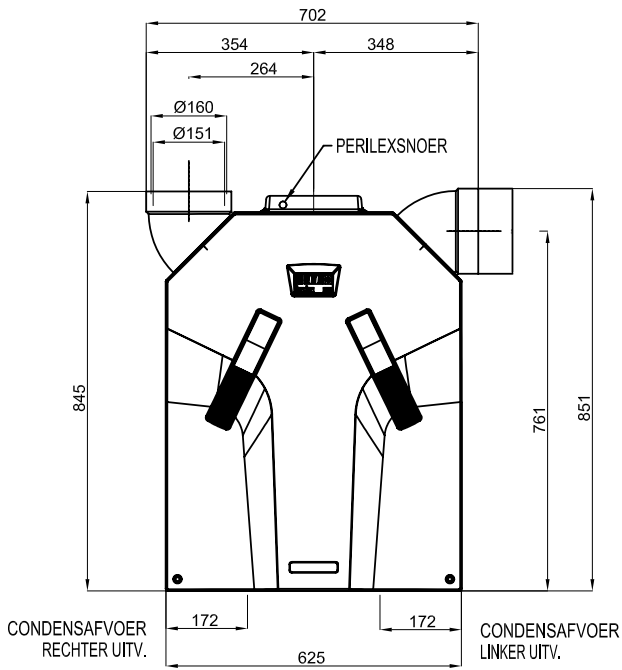
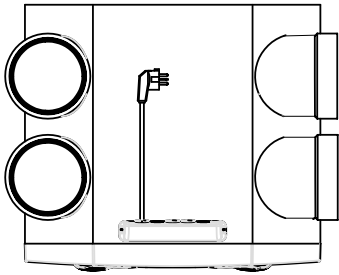
The WHR can be set to 'high' for a certain length of time by the inclusion of a pulse switch in the bathroom. The duration can be set on the display. The pulse switch is connected to the WHR via a 2-core low-voltage cable.

Dimensions

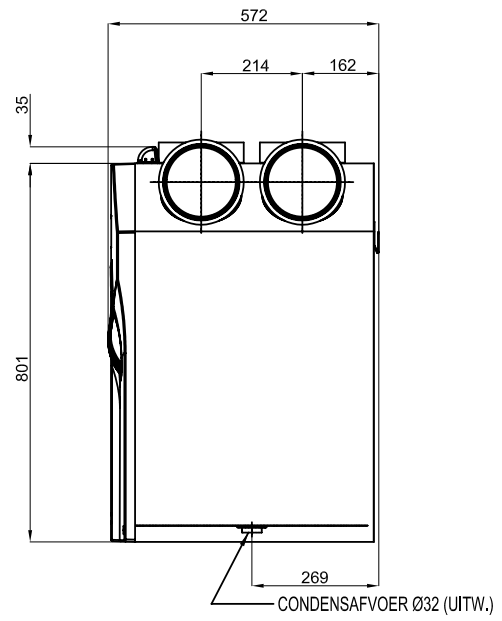
The figure on the following page gives the dimensions in mm.
0.1.



Heat recovery unit WHR 930



0.1

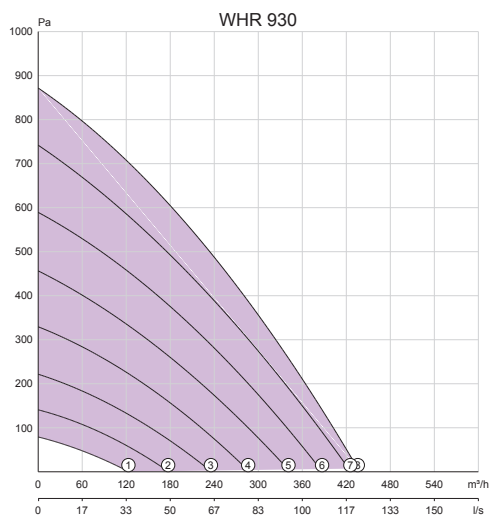




Heat recovery unit WHR 930

WHR 930

Position	Setting	Capacity	Pressure	Consumption	Consumption	Cos	Noise level		Weight
	percentage	Qv	Pst	power	current		Exhaust dB(A)	Inlet dB(A)	
	%	m³/h	Pa	Wel	A		dB(A)	dB(A)	
WHR 930									
(1)	15	100	20	10	0.08	0.50	37	45	35
(2)	30	140	40	17	0.13	0.57	43	53	
(3)	40	180	65	27	0.21	0.56	47	59	
(4)	50	225	100	44	0.35	0.55	52	64	
(5)	60	260	140	70	0.55	0.55	54	68	
(6)	70	300	175	105	0.81	0.56	57	71	
(7)	80	325	215	145	1.00	0.58	59	74	
(8)	90	350	240	196	1.42	0.60	61	75	





Heat recovery unit WHR 930

Sound

Fan		Sound capacity dB ref. 10 ⁻¹² W						
Type	Level	125Hz	250Hz	500Hz	1000Hz	2000Hz	4000Hz	8000Hz
WHR 930	1	56	50	41	34	23	13	13
WHR 930	2	60	60	50	44	35	26	12
WHR 930	3	66	65	56	51	43	35	22
WHR 930	4	71	69	62	56	49	42	30
WHR 930	5	75	71	66	61	54	47	35
WHR 930	6	77	74	69	64	58	52	40
WHR 930	7	78	76	72	68	61	55	43
WHR 930	8	79	76	74	69	62	57	45



Heat recovery unit WHR 930

Accessories and controls

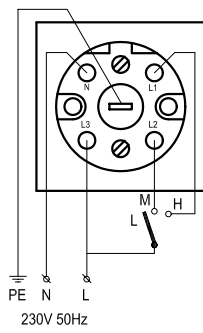
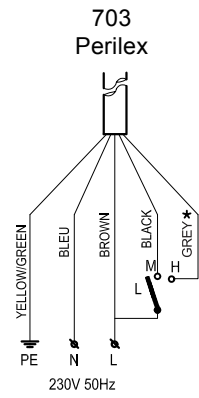
For accessories and controls, please refer to the relevant chapters. A summary is given below in the form of a table.

Accessories	page
Non-return damper (RSK 150)	495
Ventilation valves for air supply (STH)	505
Ventilation valves for air exhaust (STB / overspraakdemper SGD)	509
Ventilation valves for air exhaust (STC / overspraakdemper SGD)	513
Ventilation valves for air exhaust (STK)	515
Ventilation valves for air exhaust (STV)	519
Kitchen box (SKB)	523
Noise-proofing hose (SFD)	523
Non-powered extractor hood (WK)	525
Hybrid 'chimney' (ExSense)	527

Controls	page
Radio control (RFZ)	465
Position switch (SA 1-3V, SAI Flash, pulsschakelaar)	467



Heat recovery unit WHR 930





New Build